



2016
 Apostle Islands Station of
 The Wayzata Yacht Club (“AIS”)
 Bayfield Race Week
 July 4 - 8, 2016
 Sailing Instructions (“SIs”)

Apostle Islands Station of The Wayzata Yacht Club (“AIS”) is the Organizing Authority for the event being held in Bayfield, WI.

- | | |
|-----------------------|---|
| Morning Announcements | Will occur approx. 0930 every day via VHF Radio Channel 72
Course information will be posted on Race Committee (“RC”) Boat prior to <i>start</i> and announced on VHF Radio Channel 72 |
| First Race | 1100 Warning |
| Succeeding Races | Warning signal for subsequent races for any fleet (including MD/JAM/Sport Boat) during a day will be at discretion of RC, but not less than 15 minutes after the last boat’s <i>finish</i> in the previous race. |

1.0 Rules. The races specified in AIS Bayfield Race Week NOR will be governed by the *rules* as defined in the Racing Rules of Sailing 2013-2016 (“RRS”)

2.0 Notice to Competitors. Official notices to competitors will be posted on the notice board located at the Bayfield Pavilion on Rittenhouse Avenue (“Official Notice Board”) and at the relevant event page on yachtscoring.com.

3.0 Changes in Sailing Instructions. Changes to the SIs will be posted on the Official Notice Board and at the relevant event page on yachtscoring.com two hours prior to the first race of the day and will be announced by RC on VHF Radio Channel 72 prior to the warning signal of a race per RRS *Rule* 90.2, except a change to the race schedule will be posted by 2000 on the preceding day before it takes effect. RC may alter these SIs on-the-water by hail and announcement on VHF Radio Channel 72.



4.0 Signals

- 4.1 Signals made ashore will be displayed by RC Boat at Apostle Islands Marina.
 - 4.1.1 When flag AP is displayed ashore, ‘1 minute’ is replaced with not less than 1 hour in the Race Signal AP. This changes RRS Race Signal AP.
- 4.2 Special signals in the racing area:
 - 4.2.1 Flag “S” is the “Shortened Course” Signal.
 - 4.2.1.1 If the RC signals a shortened course (displays flag S without any sound signal) before a *start*, then the time limit for the first boat to finish for all races for the affected classes has been changed to 2.5 hours from their start signal. No sound signal will be made.
 - 4.2.1.2 If the RC signals a shortened course (displays flag S with two sounds) after the *start* signal, the finishing line for RC-specified classes will be,
 - (a) at a rounding *mark*, between the *mark* and a RC Boat staff displaying flag S; or
 - (b) at any place along the rhumb line of the course, as determined by the RC. The shortened course must be signalled before the first boat crosses the finishing line. Listen for a hail (via voice hail and/or radio VHF Radio Channel 72) for affected classes. Sounds signals will be repeated at the discretion of the RC. This changes RRS *Rule 32.2* and RRS Race Signal ‘S’. Failure or delay to hear announcements by competitors will not be grounds for request for redress. This changes RRS *Rule 62.1(a)*.

5.0 Schedule of Races.

- 5.1 Registration for all classes will be Sunday July 3, 2016 from 1600 1800 hours. Skippers meeting for all classes will be held Monday July 4, 2016 at 0800 hours at the Pavilion. Attendance of all skippers is mandatory.
- 5.2 One race for all classes will constitute a regatta.
- 5.3 The scheduled warning time for the first race each day will be 1100.
- 5.4 The WYC/AIS Memorial Cup will be a 1 day pursuit start race for all Buoy, MD, JAM, and Sport Boat classes.
- 5.5 Buoy Racing Class
 - 5.5.1 A total of 10 races are planned. Up to 3 races are scheduled for Monday through Thursday. One race is scheduled for Friday; however, if 5 races have not been completed by end of Thursday, two races may be held on Friday; however no original starting signal for a race may occur after 1430 hours on Friday.



5.5.2 Races for any day may be buoy and/or medium distance (utilizing islands, drop marks, and/or fixed buoys) at discretion of RC.

5.6 Mid-Distance and JAM Class

5.6.1 One race per day is scheduled for each day, but a second race is allowed. No original starting signal for a race may occur after 1430 hours.

5.6.2 Races for any day may be buoy and/or medium distance (utilizing islands, drop marks, and/or fixed buoys) at discretion of RC.

5.6.3 In accordance with RRS and at sole discretion of RC, a race may be shortened to attempt to obtain a completed race for each day..

5.7 Sport Boat Class

5.7.1 A total of 13 races are planned. Up to 3 races are scheduled for Monday through Friday.. No original starting signal for a race may occur after 1430 hours

5.7.2 Races for any day may be buoy and/or medium distance (utilizing islands, drop marks, and/or fixed buoys) at discretion of RC.

5.8 The intended sailing of any subsequent races will be announced via VHF Radio Channel 72 on the day's morning radio call.

6.0 **Class Flags.**

6.1 Class flags must be flown from the backstay.

6.2 Flags will be provided at the Skippers Meeting

7.0 **Racing Areas.** *Racing* may be held anywhere in, near or around the Apostle Islands (including without limitation Madeline Island).

8.0 **The Course(s)**

8.1 Courses will be posted on the display board on RC boat, which will be the official course designation. RC may also announce the course on VHF Radio Channel 72.

8.2 For Buoy Fleet courses (excluding Medium Distance Courses):

8.2.1 The diagram in Addendum “A” attached shows the courses, including the approximate angles between legs, the order in which *marks* are to be passed, and the side on which each *mark* is to be left.

8.2.2 A leeward mark may be set upwind of the start line.

8.2.3 Courses will be designated on a display board on RC Boat by letter (e.g., triangle (‘T’), windward/leeward (‘Wa’ or ‘Wb’), and/or olympic (‘O’) or combination thereof) and number.



See Addendum A. ‘Wa’ designates a windward/leeward *short* course. ‘Wb’ designates a windward/leeward *long* course. If no number follows the letter(s), sail that element one time. If a number follows a letter, sail that element of the course that many times. NOTE: Classes on the same venue may have different marks, bearings to the weather mark and/or different number of roundings. Read your display boards.

- 8.2.4 The approximate compass bearing and distance from the *starting* line to Windward will be displayed from RC Boat.
- 8.3 For MD & JAM Fleets courses and Medium Distance Course for the Buoy Fleet: The diagram in illustration “B” shows the approximate lat/long and general vicinity of marks that could be used. The course for MD/JAM fleets will be posted on the display board on RC Boat and will be the official course designation.
- 8.4 Sport Boat Fleets shall race a combination of buoy and MD races. While racing a buoy course, follow the instructions of 8.2, while racing a MD course, follow the instructions of 8.3
- 8.5 Bayfield Race Week Memorial Cup - A single day race may be run at any day during the week to honor the memory of those who have passed away who have made significant contributions to Bayfield Race Week. This shall be a pursuit race, with each yacht’s start time provided at the skippers meeting or social the night before the event. Starting times shall also be posted on the applicable page on yachtscoring.com. Starting area, course and finish line location to be announced at the morning radio call the day of the race.
 - 8.5.1 The score of each boat’s Memorial Cup finishing position will also be included within their respective division for overall scoring of Bayfield Race Week.

9.0 Marks

- 9.1 *Marks* may be:
 - 9.1.1 Temporary buoys (which may be red, orange, white or green and be in the form of spheres or tetrahedrons),
 - 9.1.2 islands,
 - 9.1.3 Government navigation marks/buoys.
- 9.2 An offset *mark* may be used near the windward mark and is a *mark* of the course to be passed after and on the same side as the windward mark.
- 9.3 A keep-off buoy(s) may be attached to, and made part of, the RC Boat to keep boats from contact with the RC Boat.
- 9.4 All boats will obey all government navigation marks/buoys along the rhumb line while *racing*, except if the navigation mark/buoy is a *mark*



of the course, when such navigation mark/buoy may be rounded pursuant to RC instructions.

10.0 The Start

10.1 *Start* Order: Sport Boat Fleet, Buoy Fleet B, Buoy Fleet A, MD-A, MD-B, MD-C, MD-D, JAM

10.2 Races will be *started* using RRS *Rule 26* and the following signals. Times will be taken from the visual signals; the absence or delay of a sound signal will be disregarded.

Signal	Flag	Minutes before <i>start</i> signal
Warning	Class Flag	5
See Preparatory	<u>P, I, Z, Z with I, or black flag</u>	4
One Minute	Preparatory Flag removed	1
<i>Start</i>	Class Flag Removed	0

The warning signal for each succeeding class may be made with the *start* signal of the preceding class.

10.3 The *start* line will be between a staff displaying an orange flag or shape on RC Boat and port end *start mark*.

10.4 RC may move a *start mark* at any time prior to removal of preparatory signal flag. This changes RRS *Rule 27.2*.

10.5 Boats whose warning signal has not been made shall avoid the starting area during the starting sequence for other races.

10.6 Recalls will be signaled as follows:

10.6.1 When signaling an individual recall with an ‘X’ flag, RC may hail (and may announce via radio) the sail number(s) of boat(s) being recalled. Failure or delay to hear or provide announcements will not be grounds for request for redress. This changes RRS *Rule 29.1* and 62.1(a).

10.6.2 General Recall.

A recalled class will go to the end of the *starting* order. -This changes RRS *Rule 29.2*

10.7 Any boat using a sail with an alternate sail number will report the proper sail number to RC Boat prior to *start* of each race where such borrowed sail is used. A boat found to have broken instruction 10.7



may receive a scoring penalty equal to 20% of the number of boats registered. This changes RRS 64.1.

10.8 Bayfield Race Week Memorial Cup starts will be made with RRS 30.1 I Flag Rule in effect. The I Flag will be displayed as a preparatory signal from four minutes before the first start and taken down one minute before the last start. If any part of a boat's hull, crew or equipment is on the course side of the starting line at any time during the last minute before her starting signal and she is identified, the race committee will attempt to broadcast her sail number on VHF channel 72. Failure to make a broadcast or to time it accurately will not be grounds for a request for redress. This changes rule 62.1(a).

11.0 Cancellation

11.1 Races for individual fleets may be cancelled or *postponed* when the 5-minute mean wind speed exceeds 24 knots or wind gusts exceed 30 knots, as determined by RC Principal Race Officer ('PRO'). If these conditions exist 90 minutes before the scheduled warning signal, signals will be made ashore. If these conditions develop less than 90 minutes prior to the scheduled warning signal *start*, signals may be made by RC Boat.

11.2 Should the 5-minute mean wind speed exceed 20 knots but not 24 knots RC PRO may change the course for some or all fleets to a Medium Distance course, as determined by the PRO (with input by RC Chair at PRO's discretion).

12.0 Change the Next Leg of the Course. RC may change a leg of the course that begins at a rounding *mark* or at a gate by changing the position of the next *mark* (or the finishing line) and signalling all boats before they begin the leg. The next *mark* need not be in position at that time.

- (a) If the direction of the leg will be changed, the signal will be the display of flag C with repetitive sounds and the new compass bearing.
- (b) RC will not display (i) green triangle or flag for a change to starboard or a red rectangle or flag for a change to port, or (ii) the minus (-) sign or the plus (+) sign.
- (c) Subsequent legs may be changed without further signalling to maintain the course shape.

This changes RRS *Rule 33*.

13.0 The Finish

13.1 Buoy Fleet: Unless otherwise specified by RC, the finishing line for Buoy Fleet will be between a staff displaying an orange flag on a RC Boat and the course side of the mark closest to RC Boat after displaying code flag "L" with one sound in the *racing* area.



- 13.2 MD/JAM Fleet: Bayfield Fishing Dock *finish* line will be used for all MD/JAM Fleets. The MD/JAM course may be shortened and finished as permitted in 5.2.2
- 13.3 Sportboat Fleet: When racing buoy courses, finish in accordance with 13.1 - When racing a MD course, finish in accordance with 13.2
- 13.4 Bayfield Fishing Dock Finish Line: When Bayfield Fishing Dock is used as one *mark* of the *finish* line, the other end will be a *mark* approximately 200 feet from the end of the pier, and in a line perpendicular to the dock. In absence of a second *mark* in the water, all boats must *finish* approximately 200 feet off the dock along the line specified above. In any event, each boat must cross the *finish* line from its course side.
- 13.5 All MD/JAM boats must log their GPS *finish* time and the sail number of the boat finishing ahead and behind their *finish* position.
- 13.6 Memorial Cup: Memorial Cup will be finished at the Bayfield City Dock. When Bayfield City Dock is used as one mark of the finish line, the other end will be a mark approximately 600 feet from the end of the pier in a line projected by extending Rittenhouse Avenue through the end of the pier. In the absence of a second mark in the water, all boats will *finish* within approximately 600 feet of the pier along the line specified above.

14.0 Time Limits

- 14.1 Buoy Fleet: The time limit for the first boat to finish buoy races will be 3 hours from their *start* signal. Any boat not finishing a race within 1 hour after the first boat finishes will be scored TLE. The time limit for Medium Distance Races shall be in accordance with 14.2
- 14.2 MD/JAM Fleets: For all MD/JAM Fleets the time limit for the first boat to finish will be 4 hours from their *start* signal. Any boat not finishing within 1 hour after the first boat in there fleet finishes will be scored TLE.
- 14.3 Sport Boats: 14.1 shall apply when sailing a buoy course, 14.2 shall apply when sailing a MD course.
- 14.4 Memorial Cup: Any boat not finishing within 3 hours of the first boat to finish shall be scored TLE
- 14.5 All boats retiring from a race at any time must inform RC and will be scored DNF and receive points equal to one more than the number of boat finishing the race. This changes RRS A4.2 and A11.
- 14.6 A boat not finishing within the applicable time limit will be scored TLE and receive points equal to one more than the number of boat finishing the race. This changes RRS Rule 35, A4.2 and A11.
- 14.7 Failure for any boat to meet time limit(s) will not be grounds for redress. This changes RRS *Rule* 62.1(a).

15.0 Protests

Apostle Islands Station of The Wayzata Yacht Club	Sailing Instructions	06/30/16 Page: 7
--	----------------------	------------------



- 15.1 A boat intending to *protest* will, as soon as possible after finishing or retiring, inform the *finish* line RC Boat of her intent to *protest* and the sail number(s) of the boat(s) being *protested*. If RC Boat is not ‘on station’ at the finishing line, then the boat must inform RC within 1 hour of their *finish*. This changes RRS Rule 61.1(a).
- 15.2 *Protests* must be delivered to RC PRO or AIS Fleet Captain.
- 15.3 Time limit for filing *protests* and requests for redress will be **90 minutes** after a boat’s *finish*. If the course was shortened, the time limit for filing protests is extended to two (2) hours.
- 15.4 Section B and Section D of Appendix T will be used to allow a boat to take a POST RACE PENALTY (T2) and ARBITRATION (T5).
- 15.5 Notices will be posted on the Official Notice Board as soon as reasonably possible of receiving the the *protest*/request for redress to inform competitors of hearings in which they are parties or named as witnesses. Where reasonably possible, hearings will be scheduled for the day the *protests* were received and in the order the *protests* were received. In unusual circumstances and with sufficient notice, the Protest Committee (‘PC’) may schedule a hearing for a different day, time or order.
- 15.6 Postponement of a hearing by a *party*: a *party* to a *protest* may request postponement of a hearing for any reason by contacting the PC. PC may grant additional request(s) for postponement of hearing by a *party* only with good reason. RRS Rule 63.3(b) is changed by adding this SI #15.6.
- 15.7 Ratings *Protest*: In furtherance of RRS Rule 64.3, all class rules questions will be referred to LMPHRF (or one design authority, if one design class rules are at issue).

- 16.0 **Scoring:**
 - 16.1 Corrected time-will be determined using the PHRF Time on Distance calculation.
 - 16.2 Scoring will be determined using the Appendix A Low Point System. There will be no throwouts. This changes RRS A2.
 - 16.3 One race is required to be completed to constitute a series.

- 17.0 **Safety Regulations.** Each boat must comply with the following:
 - 17.1 A boat that retires from a race shall notify the race committee as soon as possible. The Race Committee will monitor VHF 72,
 - 17.2 All U.S. Coast Guard and other applicable governmental laws, rules and regulations. Violation of this Rule may be subject to a lesser penalty, or no penalty, at discretion of the Protest Committee (PC). This changes RRS Rule 64.1.
 - 17.3 All boats over 22 feet must have a working motor. Violation of this Rule may be subject to a lesser penalty, or no penalty, at discretion of the PC. This changes RRS Rule 64.1



17.4 For purposes of clarification, the 2016 WYC AIS Near Shore Safety Equipment Requirements are not required for Bayfield Race Week.

17.5 Life Jackets

17.5.1 At the Start and Finish of each race, each person on board each boat is required to wear a USCG or ISO approved personal flotation device (PFD). The use of an ISO approved PFD does not negate the USCG requirement that each vessel must have at least one (1) USCG approved Type III or V life jacket for each person on board. Belt pack style PFD's are not allowed. This changes RRS 40.

17.5.2 A boat found to have broken instruction 18 may receive a scoring penalty equal to 20% of the number of boats registered. This changes RRS 64.1

18.0 Prizes.

18.1 1st, 2nd & 3rd place trophy prizes will be awarded for each fleet. Daily prizes may also be awarded. Additional trophy prizes or awards may be awarded at the discretion of the Trophy Chairperson.

18.2 1st - 5th place trophies will be awarded for the Memorial Cup Race, in addition the boat name of the overall winner shall be inscribed on the Memorial Cup Perpetual Trophy.

19.0 DISCLAIMER OF LIABILITY, WAIVER AND RELEASE

19.1 Sailing is an activity that has an inherent risk of damage and injury, including without limitation bodily injury, personal injury, permanent disability and death. Each person (including without limitation owner, skipper, crew, spectators, officials and others) participates in each race, social event and/or associated activity(ies) entirely at his/her own risk. See RRS *Rule 4*, "Decision to Race".

19.2 ORGANIZING AUTHORITY, RACE COMMITTEE, PROTEST COMMITTEE, SPONSORS, HOST CLUB AND VENUE (AND EACH OF THEIR RESPECTIVE OFFICERS, DIRECTORS, EMPLOYEES, CONTRACTORS, OFFICIALS, MEMBERS, GUESTS, VOLUNTEERS, REPRESENTATIVES AND ALL OTHER PERSONS IN THEIR CAPACITY OF ASSISTING A RACE, SOCIAL EVENT AND/OR ASSOCIATED ACTIVITIES) (COLLECTIVELY, "RACE ORGANIZERS") WILL NOT BE RESPONSIBLE OR LIABLE FOR ANY ACTION, CLAIM OR SUIT (COLLECTIVELY, "CLAIMS") OR LIABILITY, LOSS, DAMAGE, ACCIDENT OR INJURY WHATSOEVER (INCLUDING BODILY INJURY, PERSONAL INJURY, PERMANENT DISABILITY OR DEATH) (COLLECTIVELY, "DAMAGES") TO ANY PERSON, PROPERTY OR BOAT WHETHER CAUSED BY, ARISING OR RESULTING FROM THEIR ACT, ERROR, OMISSION OR ALLEGED NEGLIGENCE OR MISCONDUCT, WEATHER OR SEA CONDITIONS, HAZARDS OF ANY KIND, DEFECTS OR FAILURE OF BOATS TO BE



SEAWORTHY IN HULL, RIGGING OR GEAR, OR ANY ACTS, ERRORS OR OMISSIONS OR ALLEGED NEGLIGENCE OR MISCONDUCT OF RACE ORGANIZERS OR OTHER PARTICIPANTS OR BOATS WHICH MAY OCCUR DURING OR ARISING OUT OF OR IN CONNECTION WITH ANY RACE, REGATTA, EVENT, CRUISE, SPECTACLE, SOCIAL EVENT, RACE FACILITIES OR ANY ACTIVITY SCHEDULED, SPONSORED OR AIDED IN WHOLE OR IN PART BY ANY RACE ORGANIZER(S), TO THE FULLEST EXTENT PERMITTED BY LAW.

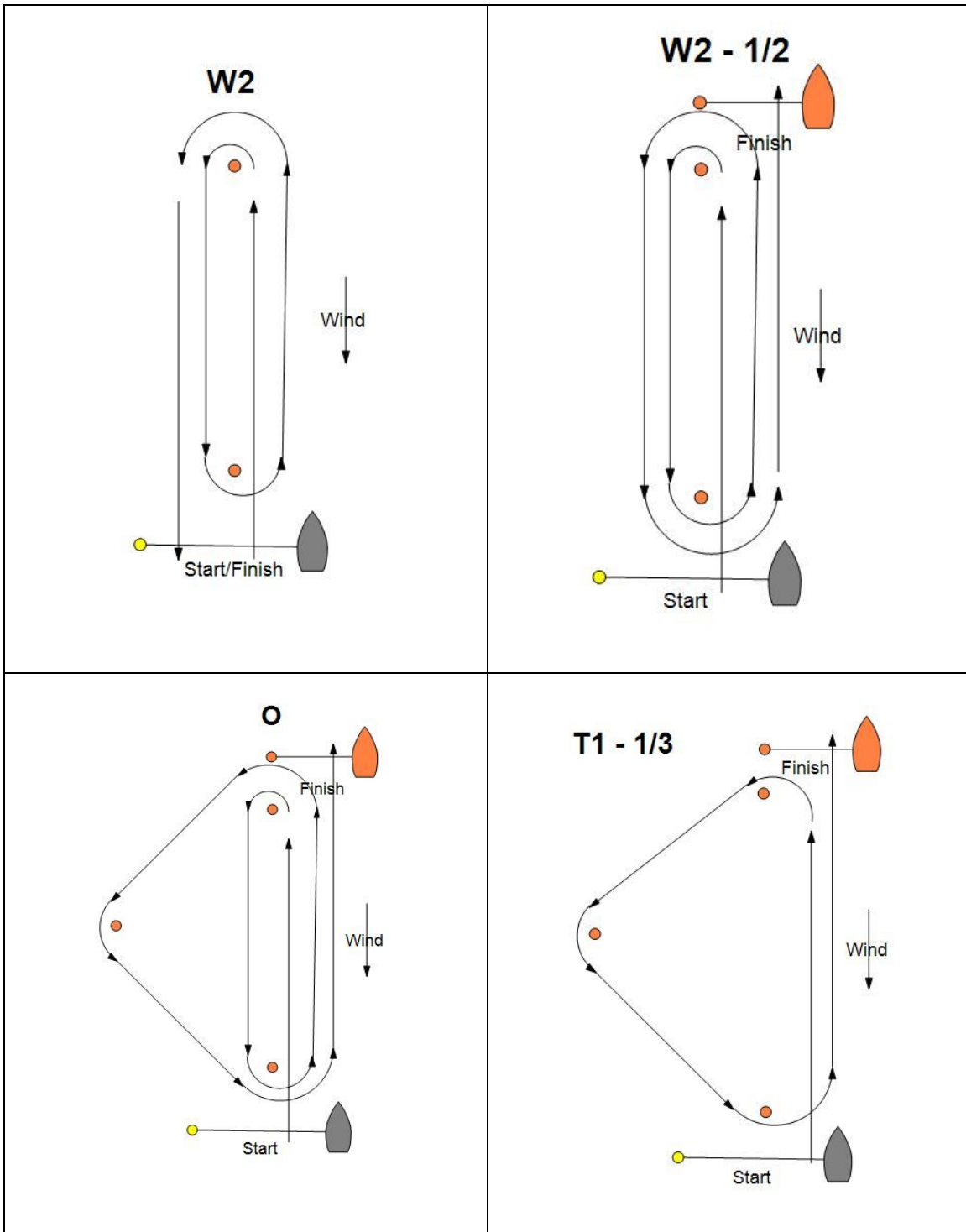
- 19.3 By participating, each participant (and in the case of children and minors, each participant's parent or guardian) forever waives, discharges and releases any and all CLAIMS whatsoever against Race Organizers for any DAMAGES to any person, property or boat (i) sustained in conjunction with or prior to, during, or after each race, social event and associated activities; or (ii) arising, relating or resulting from use of race facilities or participation in any race, social event or associated activities, to the fullest extent permitted by law.
- 19.4 Participant releases all Race Organizers from any Claim on account of giving assistance, aid, care, advice, rescue, first aid, treatment or services.
- 19.5 Owners and skippers of all participating boats are required to inform all crewmembers of this Disclaimer of Liability and Release as a Condition of Entry

20.0 Insurance. All boats must maintain Liability Insurance in full force and effect during *racing* which will include a General Liability policy written by a reputable insurance company insuring the owner and any operators against liability for bodily injury in limits of not less than \$300,000 and for property damage of not less than \$100,000. Each boat will present proof of insurance upon OA's request.

21.0 Publicity and Photographer's Rights. As a condition of participation, each participant (on behalf of him/herself and their children and minors) grants Organizing Authority, sponsors and their designated photographers the perpetual, irrevocable right, license and permission to use, publish and distribute the participant's name, photos, video, images and statements of them and their boat and crew in all forms and media worldwide (including without limitation Internet) for any purposes whatsoever (including without limitation advertising, promotions, sales of pictures, etc.) without compensation or further permission.



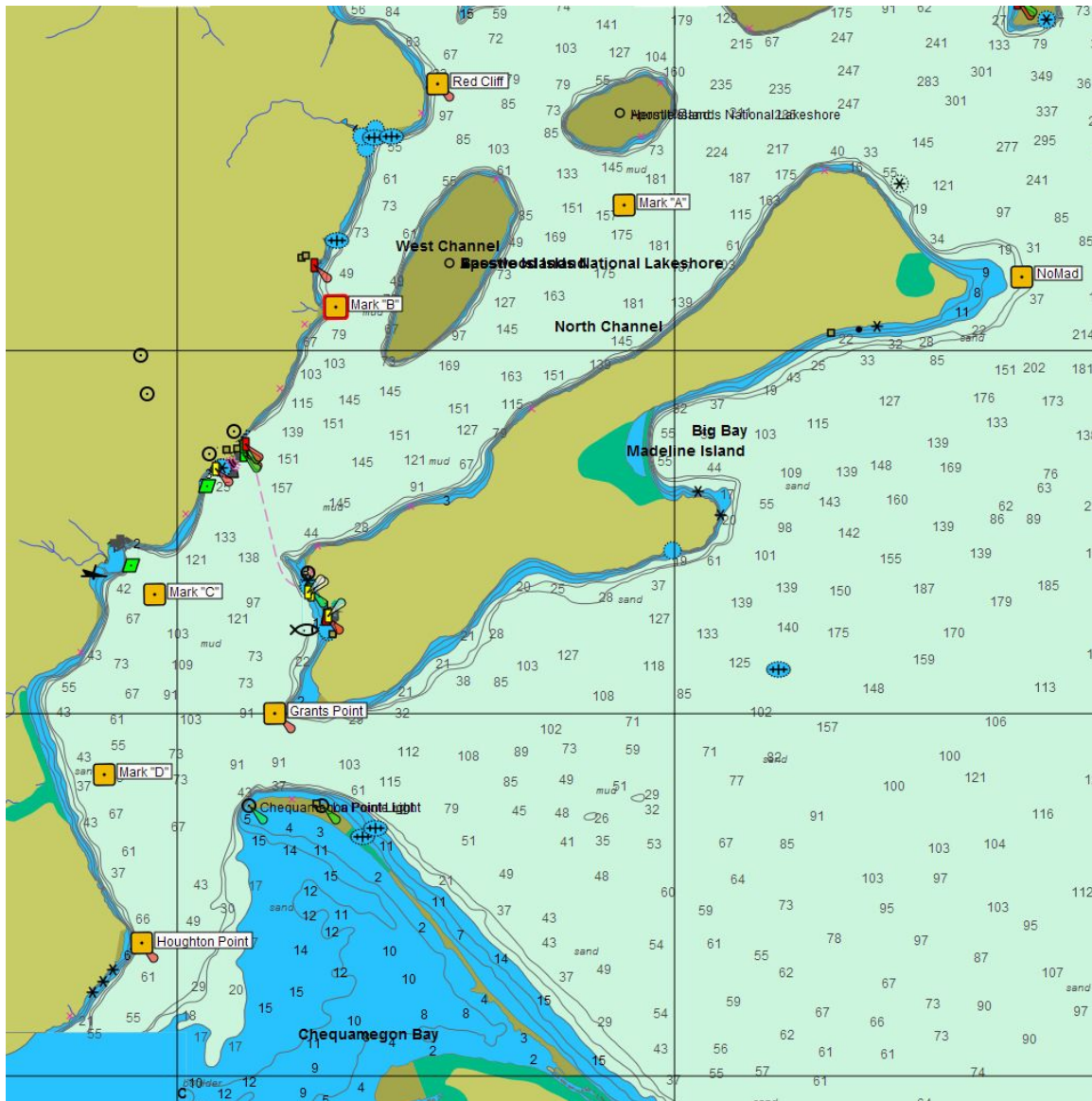
Addendum A



Any course listed above may be changed to *finish* at the Bayfield Fishing Dock.



Addendum B



NOTE: Marks A, B, C & D locations are approximate -

- Start, finish or any buoy racing marks
- Moveable, temporary inflatable marks
- Any islands such as Basswood or Hermit
- Fixed navigation marks such as Grants Point, Red Cliff or Houghton Point
- North Channel "A" Inflatable Mark: 46 52.00N / 90 41.00W
- Roy's Point "B" Inflatable Mark: 46 50.60N / 90 46.80W